



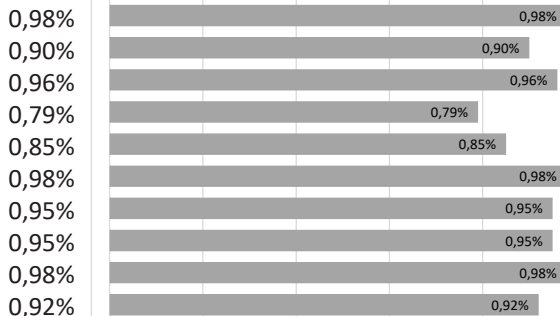
Das aktuelle STAR-Portfolio

Stand: 04-2024

Kategorie: Top Giganten

- Amazon
- Microsoft
- Alphabet
- Apple
- Tesla
- Berkshire Hathaway
- Eli Lilly
- Meta
- Nvidia
- Visa

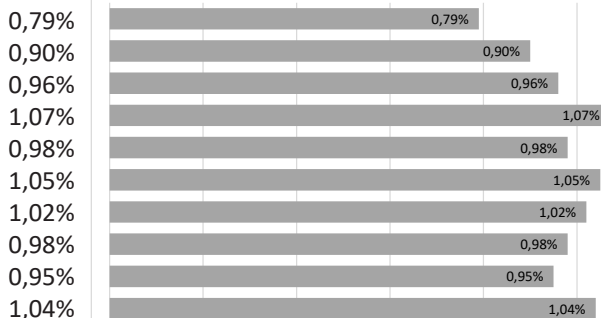
Anteil



Kategorie: Top Ertrag

- Apple
- Microsoft
- Alphabet
- Exxon Mobil
- Shell
- JP Morgan
- Bank of America
- Berkshire Hathaway
- Meta
- UBS Group

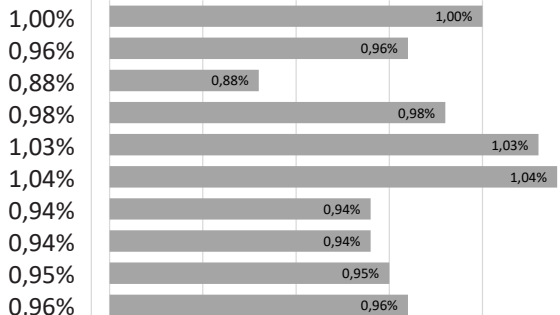
Anteil



Kategorie: Top Dividende

- Genuine Parts
- Procter & Gamble
- Bunzl
- Emerson Electric
- Lowe's
- Cincinnati Financial
- Coca-Cola
- Johnson & Johnson
- Diageo
- Medtronic

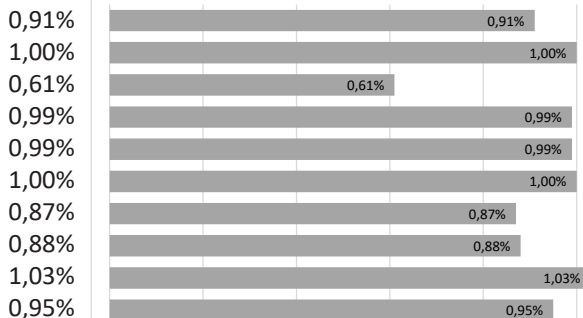
Anteil



Kategorie: Top Nachhaltigkeit

- Stora Enso
- Schneider Electric
- Brookfields Renewable
- Iberdrola
- Waste Management
- Brambles
- Neste
- Orsted
- Novozymes
- Vestas Wind Systems

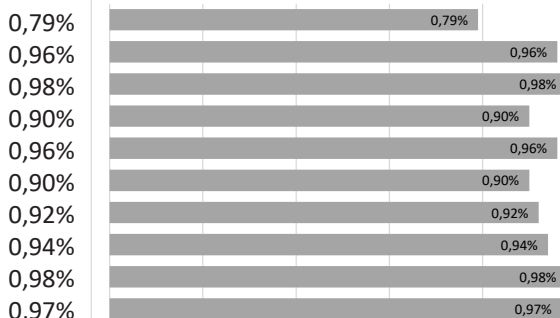
Anteil



Kategorie: Top Marken

- Apple
- Alphabet
- Amazon
- Microsoft
- Tencent
- McDonalds
- Visa
- Coca-Cola
- MasterCard
- LVMH

Anteil



Hinweis: Die Prozentsätze beziehen sich auf das gesamte Fondsvermögen einschließlich Bankguthaben und evtl. sonstiger Positionen neben den aufgeführten Aktien.



Kategorie: Top Gewinner

Broadcom
Brown & Brown
Cintas
CSL Ltd
Microsoft
Paccar
Ross Stores
Costco
Tractor Supply
United Health

Anteil



Kategorie: Top Beständigkeit

JP Morgan
Fastenal
Novo Nordisk
Berkshire Hathaway
Procter & Gamble
Nestle
Lóreal
Johnson & Johnson
Taiwan Semiconductor
Unilever

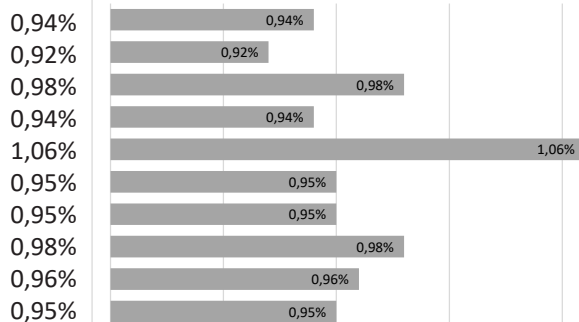
Anteil



Kategorie: Top Gesundheit

Johnson & Johnson
Roche
Novo Nordisk
Abbott Labs
Lonza
Danaher
Stryker
Thermo Fisher
Medtronic
Eli Lilly

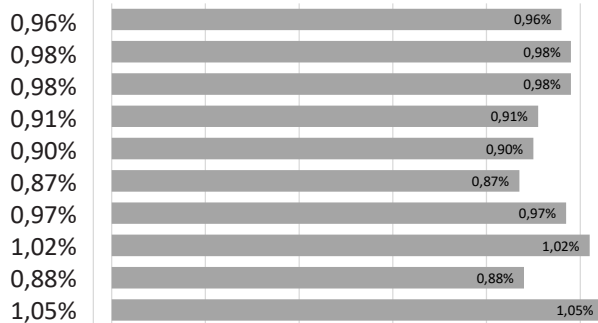
Anteil



Kategorie: Top Zukunftsgestalter

Alphabet
Amazon
Nvidia
Crowdstrike
Microsoft
Schrodinger
ASML
Carbios
Bloom Energy
Symrise

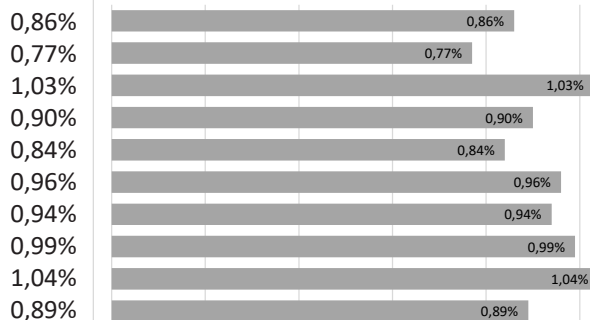
Anteil

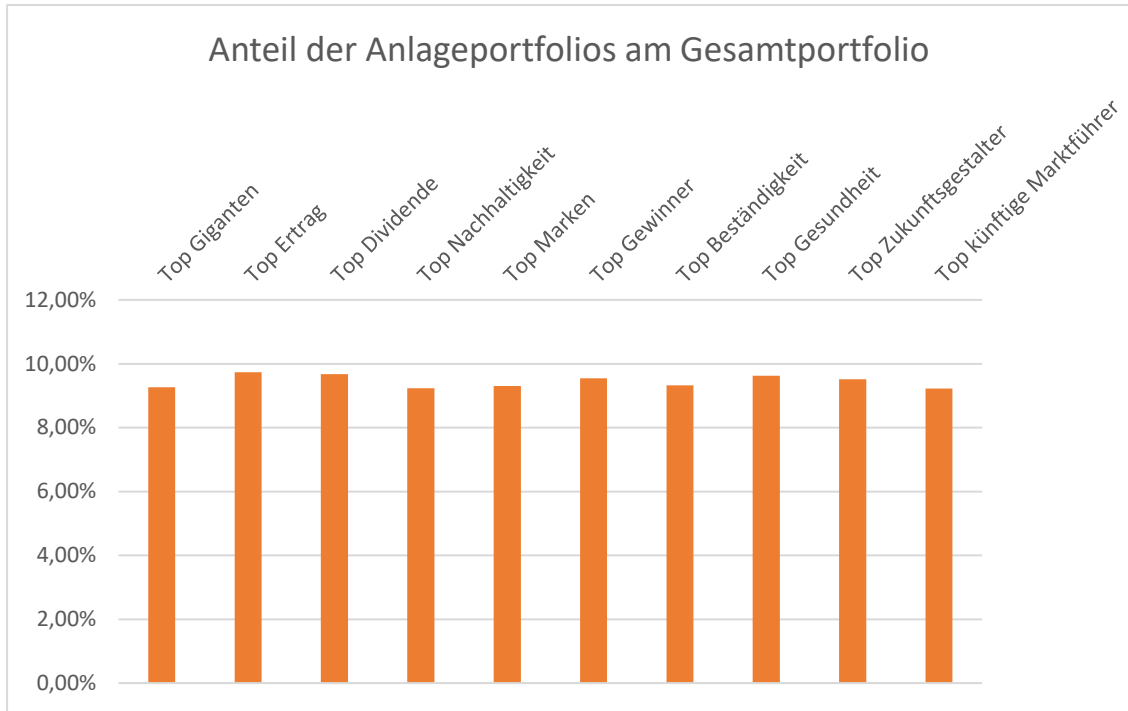


Kategorie: Top künftige Marktführer

Alimentation Couche-Tard
Adobe
Amphenol
Copart
Arista Networks
Costco
Kingspan
Lam Research
Cintas
Charles Schwab

Anteil





| | | | | | | | | | |
|-------------------------|-------------------------|--------------------------------|---------------------|------------------------------------|-------------------------|-------------------------|-------------------------|-------------|------------------|
| amazon | Apple | GPC | Brambles | Alphabet | BROADCOM | Unilever | Johnson & Johnson | Alphabet | Couche-Tard |
| Microsoft | Microsoft | P&G | novozymes | amazon | COSTCO WHOLESALE | BERKSHIRE HATHAWAY INC. | Abbott | amazon | Amphenol |
| Alphabet | Alphabet | BUNZL | Brookfield | Apple | BROWN & BROWN INSURANCE | FASTENAL | Lonza | CROWDSTRIKE | ARISTA |
| Apple | ExxonMobil | EMERSON | IBERDROLA | LVMH MOËT HENNESSY - LOUIS VUITTON | CINTAS | Johnson & Johnson | DANAHER | Schrödinger | COSTCO WHOLESALE |
| TESLA | Shell | LOWE'S | NESTE | McDonald's | CSL | J.P.Morgan | Lilly | Microsoft | Adobe |
| BERKSHIRE HATHAWAY INC. | J.P.Morgan | CINCINNATI INSURANCE COMPANIES | Orsted | Coca-Cola | Microsoft | L'OREAL | Medtronic | ASML | Kingspan |
| Lilly | BANK OF AMERICA | Coca-Cola | Schneider Electric | Microsoft | PACCAR | Nestlé | novo nordisk | Bloomenergy | CINTAS |
| Meta | BERKSHIRE HATHAWAY INC. | Johnson & Johnson | storoximo | Tencent | ROSS DRESS FOR LESS | novo nordisk | Roche | CARBIS | Gopart |
| NVIDIA | Meta | DIAGEO | Vestas | VISA | TRACTOR SUPPLY CO | P&G | stryker | NVIDIA | Lam RESEARCH |
| VISA | UBS | Medtronic | WM WASTE MANAGEMENT | mastercard | UnitedHealth Group | tsmc | ThermoFisher SCIENTIFIC | symrise | charles SCHWAB |